

# QA BEAMCHECKER™ PLUS

## QUICK AND ACCURATE QA

Reliable and uncomplicated daily QA for linear accelerators and rotational systems



### PATENTED SOFTWARE-FREE INTERFACE

The QA BeamChecker Plus can be used as a stand-alone unit to display a pass/fail indication for each energy via a large, brightly lit display, clearly visible from the patient monitor. With no need to connect to a computer, the QA BeamChecker Plus has a more streamlined user experience than the competition, which helps to minimize the potential for user error.

### WIRELESS REAL TIME DATA COLLECTION

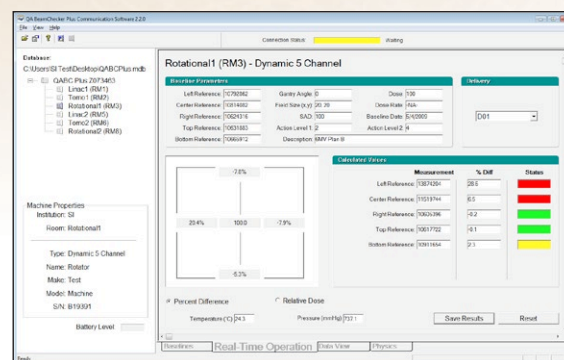
The QA BeamChecker Plus is equipped with wireless data communication capabilities, automatically transferring measurements to the software in real time, allowing the user to view and analyze results immediately. Wireless communication means less clutter in the accelerator room, no cable replacement costs, and a safer work environment.

### AUTOMATIC ENERGY DETECTION AND RESET

At beam delivery, the QA BeamChecker Plus automatically begins acquisition while simultaneously applying temperature and pressure correction, detecting the energy type, and determining beam constancy, flatness, and symmetry. The data is saved for later review, and the instrument is ready in under 10 seconds for the next energy.

### HIGH DOSE RATE COMPATIBILITY

Allows for accurate analysis of beams delivered with high dose rates (up to 2400 MU/min), meeting the requirements for full use with flattening filter free, high dose rate linear accelerators.



Real-Time Operation

# Features

## Reduced Trips into the Treatment Room

- Accurately measure photon, electron, and proton beams, with option to display results as dose for output measurements.
- Integrated build-up for all supported energies eliminates need to enter the vault between measurements and minimizes chances of error.
- Simply push a button and flip the device, the QA BeamChecker Plus switches between photon and electron modes automatically.

## Real-Time Operation and Physics Modes

- Physics Mode enables the QA BeamChecker Plus to be used as a basic array of ion chambers and electrometers for research, experimentation, and other custom applications.
- User can set unique and separate tolerance values for each parameter calculated, now with graphical view enhancements.

## Dynamic Rotational Therapy QA

- With a combined dosimetric check, the 5 channel mode is ideal for rotational VMAT, IMAT, TomoTherapy, dynamic wedge checks or other custom tests.

## Powerful Data Management

- All data is saved and can be trended, printed, electronically signed off on and/or exported to a spreadsheet application.
- Store the QA BeamChecker Plus database on a network and access from any PC with the software installed.
- Daily QA for up to 9 treatment rooms can be performed with just one QA BeamChecker Plus.

## Bluetooth® Wireless Option

- The optional Bluetooth Adapter Kit adds wireless communication for PC software functions including baseline and Real-Time operation modes.

## QA BEAMCHECKER PLUS (REF 90501) SPECIFICATIONS

### 8 VENTED IONIZATION CHAMBERS, FULLY GUARDED

One center detector, Four quadrant detectors (7.5 cm from center), Three energy identification chambers

Chamber Volume	0.6 cm <sup>3</sup>
Parallel Plate Separation	4.0 mm
Collection Electrode	1.39 cm diameter

### INHERENT WATER-EQUIVALENT BUILDUP

Photons: 3.5 cm      Electrons: 1.5 cm

### SUPPORTED ENERGIES

Photons: <sup>60</sup>Co to 25 MV      Electrons: 6 MeV to 25 MeV

### MULTIPLE VAULT CAPABILITY

Up to 9 rooms, any combination of linear accelerator or Rotational systems

### TEMPERATURE AND PRESSURE MEASUREMENT

Precision sensor on board, automatic compensation

**DIMENSIONS**      *Height:* 6.15 cm, 2.42 in      *Width:* 30.86 cm, 12.15 in  
(QABC Plus)      *Length:* 40.64 cm, 16 in      *Weight:* 5.0 kg, 11 lbs

**DIMENSIONS**      *Height:* 7.16 cm, 2.82 in      *Width:* 10.16 cm, 4.0 in  
(Power/Data Cradle)      *Length:* 29.21 cm, 11.50 in      *Weight:* 1.8 kg, 4 lbs

**LIGHT FIELD ALIGNMENT**      20 cm x 20 cm alignment grid for easy setup

### TOMOTHERAPY ALIGNMENT

Three 2 mm embedded lead BBs, top, rear, side alignment marks

**REAL TIME CLOCK**      Date and time stamp for all measurements

**INTERNAL MEMORY**      Store 512 data points before transfer required

### POWER/DATA CRADLE

Interface for battery charging and serial communications

Two 9 pin serial cables provided, 7.6 m (25 ft) and 33 m (100 ft)

### POWER

Battery:      1.3 Ah SLA, approximately 4 hours continuous use, user replaceable

Charger Input:      90 - 240 VAC, 50-60 hz, IEC 60601-1 approved wall mounted power supply

### SOFTWARE SPECIFICATIONS

Operating System      Microsoft® Windows® 7 SP1 or higher  
Microsoft® Windows® 8.1 SP1 or higher  
Microsoft® Windows® 10 SP1 or higher

Processor      Intel® or AMD®, 1 GHz or greater

Memory      1 GB or greater

Hard Drive      1 GB or greater

Screen resolution      1024 x 768 or greater

**PERIPHERALS**      CD-ROM Drive, One available serial port

### OPTIONS

Gantry Mount (REF 70500)

Additional Power/Data Cradle (REF 70502)

Serial to USB adapter (REF 70503)

Precision TomoTherapy Leveling Platform (REF 70505)

Bluetooth Adapter Kit (REF 70504)



3120 Deming Way Middleton WI 53562-1461 USA  
800-261-4446 . ph 608-831-0025 . fax 608-831-2202  
www.standardimaging.com

© 2017 Standard Imaging, Inc. 1261-26, 1/17

RapidArc™ Radiotherapy Technology and RapidArc™ is a trademark of Varian Medical Systems.  
TomoTherapy® is a registered trademark of TomoTherapy Incorporated.  
Windows® is a registered trademark of Microsoft Corporation.  
Bluetooth is a registered trademark of Bluetooth SIG, Inc.

Specifications subject to change without notice.